

LINEAR DRAINAGE SYSTEM

Drainage channels & inlets w/internal section 76mm/3"

Article	Name	Description	Class	Length, mm/inch	Width, mm/inch	Height, mm/inch	Weight, kg/lbs	Quantity to order
8800	NP-PC8800	plastic channel "SPARK"	A	1000 39.37"	74 2.9"	90 3.6"	0.8 1.25	
28801	NP-PG28801	plastic grating "SPARK"	A	500 19.7"	85 3.4"	14 0.5"	1.1 0.41	
					Diameter mm/inch	Height, mm/inch	Weight, kg/lbs	
8372	NP-SWI8372	plastic storm water inlet "SPARK"	A	n/a	250 10"	311.5 12.5"	0.74 1.63	
3382	NP-PG3382	plastic grating "SPARK"	A	n/a	269 10.6"	31 1.2"	0.31 0.68	

LINEAR DRAINAGE SYSTEM

Drainage channels w/internal section 100mm/4"

Article	Name	Description	Class	Length, mm/inch	Width, mm/inch	Height, mm/inch	Weight, kg/lbs	Quantity to order
8050	NP-PC8050	plastic channel	A - C	1000 39.37"	145 5.8"	55 2.2"	0.8 1.76	
8010	NP-PC8010	plastic channel	A - C	1000 39.37"	145 5.8"	80 3.2"	1.1 2.42	
8020	NP-PC8020	plastic channel	A - C	1000 39.37"	160 6.4"	120 4.8"	1.65 3.63	
8000	NP-PC8000	plastic channel	A - C	1000 39.37"	160 6.4"	155 6.2"	2.2 4.84	
8040	NP-PC8040	plastic channel	A - C	1000 39.37"	160 6.4"	200 8"	2.7 5.94	

LINEAR DRAINAGE SYSTEM

Drainage channels w/internal section 200mm/8" & 300mm/12"



Article	Name	Description	Class	Length, mm/inch	Width, mm/inch	Height, mm/inch	Weight, kg/lbs	Quantity to order
8540	NP-PC8540	plastic channel	A - C	1000 39.37"	260 10.4"	200 8"	3.6 7.92	

Sand traps



Article	Name	Description	Class	Length, mm/inch	Width, mm/inch	Height, mm/inch	Weight, kg/lbs	Quantity to order
8080	NP-PST8080	plastic sand trap	A - C	1000 39.37"	260 10.4"	200 8"	3.6 7.92	

Gratings for drainage channels w/internal section 100mm/4"



Article	Name	Description	Class	Length, mm/inch	Width, mm/inch	Height, mm/inch	Weight, kg/lbs	Quantity to order
2010	NP-GG2010	galvanized stamped steel grating (zinc coated)	A	1000 39.37"	136 5.4"	3 0.12"	1.6 3.52	
20303	NP-DG20303	ductile cast iron grating (slotted)	A - C	500 19.7"	136 5.4"	15 0.6"	2.8 6.16	
20403	NP-DG20403	ductile cast iron grating (mesh)	A - C	500 19.7"	136 5.4"	15 0.6"	2.8 6.16	

LINEAR DRAINAGE SYSTEM

Gratings for drainage channels w/internal section 200mm/8"



Article	Name	Description	Class	Length, mm/inch	Width, mm/inch	Height, mm/inch	Weight, kg/lbs	Quantity to order
2510	NP-GG2510	galvanized stamped steel grating (zinc coated)	A	1000 39.37"	236 9.44"	15 0.6"	3.3 7.26	
25303	NP-DG25303	ductile cast iron grating (slotted)	A - C	500 19.7"	236 9.44"	15 0.6"	5.6 12.32	
25403	NP-DG25403	ductile cast iron grating (mesh)	A - C	500 19.7"	236 9.44"	16 0.6"	5.6 12.32	

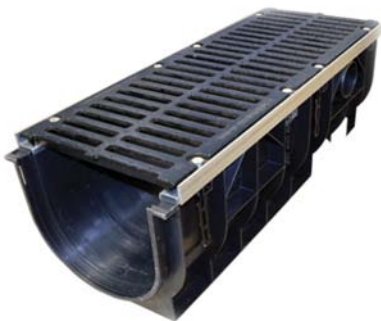
Accessories for channels w/internal section 100mm/4" & 200mm/8"



Article	Name	Description	Class	Length, mm/inch	Width, mm/inch	Height, mm/inch	Weight, kg/lbs	Quantity to order
6830	NP-EC6830	end cap (plastic)	-	155	160	185	0.13	
6831	NP-EC6831	end cap (plastic)		6.2"	6.4"	7.4"	0.29	
				5.4"	2.04"		0.31	
6080	NP-GF6080	grating fastener (zinc coated steel)	-	117 4.68"	30 1.2"	15 0.6"	0.11 0.24	
6580	NP-GF6580	grating fastener (zinc coated steel)	-	235 9.4"	30 1.2"	20 0.8"	0.25 0.55	

LINEAR DRAINAGE SYSTEM

Drainage channels series MAXI w/internal section 300mm/12"



Article	Name	Description	Class	Length, mm/inch	Width, mm/inch	Height, mm/inch	Weight, kg/lbs	Quantity to order
8700	NP-PCM08700	complete set: drainage channel MAXI plastic with cast-iron grating (slotted)	E	1000 39.37"	385 15.4"	375 15"	47 103.4	

POINT DRAINAGE SYSTEM

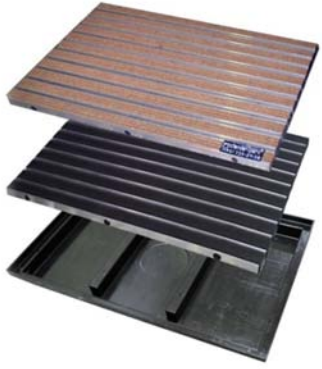
Storm water inlet 300X300/12"X12" w/gratings & accessories



Article	Name	Description	Class	Length, mm/inch	Width, mm/inch	Height, mm/inch	Weight, kg/lbs	Quantity to order
8331	NP-PSC8331	plastic solid cover	A	280 11.2"	280 11.2"	23 0.9"	1 2.2	
3380	NP-PG3380	plastic grating (slotted)	A - C	280 11.2"	280 11.2"	23 0.9"	0.8 1.76	
3332	NP-DG3332	ductile cast iron grating (mesh)	A - C	280 11.2"	280 11.2"	23 0.9"	3.5 7.7	
8379	NP-PB8379	plastic basket	-	222 9.5"	135 6.2"	155 6.2"	0.2 0.44	
8378	NP-PP8378	plastic partition	-	-	250 9.8"	242 9.6"	0.2 0.44	
8370-C	NP-SWI8370	plastic storm water inlet	A - C	300 12"	300 12"	300 12"	1.3 2.86	

ENTRANCE MAT SYSTEM

Entrance mats "CITY"



Article	Name	Description	Class	Length, mm/inch	Width, mm/iinch	Height, mm/inch	Weight, kg/lbs	Quantity to order
1002	NP-EM1002	entrance mat "CITY" textile		400 16"	600 24"	23 0.9"	1 2.2	
1001	NP-EM1001	entrance mat "CITY" rubber		400 16"	600 24"	23 0.9"	0.8 1.76	
8640	NP-EPB8640	plastic base "TWIST"		400 16"	600 24"	23 0.9"	3.5 7.7	



St. Louis Drainage Systems, LLC 423 Clark Street
 Saint Charles, Missouri 63301
 636-946-1371 phone
 314-558-9797 fax
www.stlouisdraigesystems.com